

# Sizing Images for Projection



# Size requirements

- Our projector's native resolution is :-

1920 pixels wide x 1200 pixels high – maximum.

Therefore images need to be downsized to conform.

**NB** : 1920 pixels does not refer to the long side.

Only the width.

This means that vertical images (Portrait Format), must not exceed 1200 pixels high.

Square images must not exceed 1200 pixels x 1200 pixels.

- The projector uses the sRGB colour space.
- So, for best results, images should be converted to this.

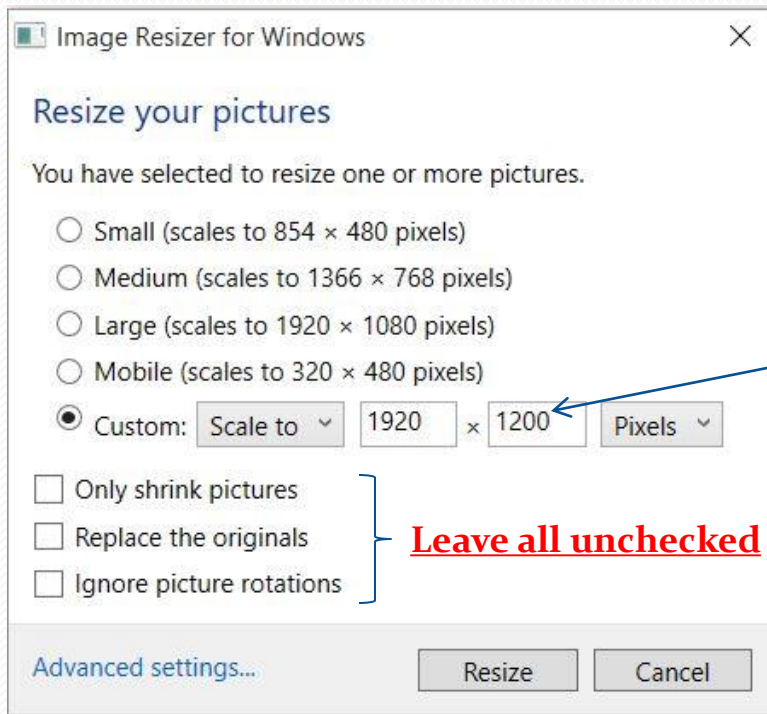
# Resizing in Windows

- To be able to resize images in Windows you will need to download “Image Resizer for Windows”.

This will add “Resize Photos” to the window that pops up when you right click on an image.

Get re-sizer here :- <https://imageresizer.codeplex.com/>

# Resizing in Windows



Right click

Change to 1200

Right click on copy of image to be resized.  
Select > Resize Pictures > Custom.  
Click Resize.



Toyo\_stack  
(Custom).jpg

After resizing you will see this.

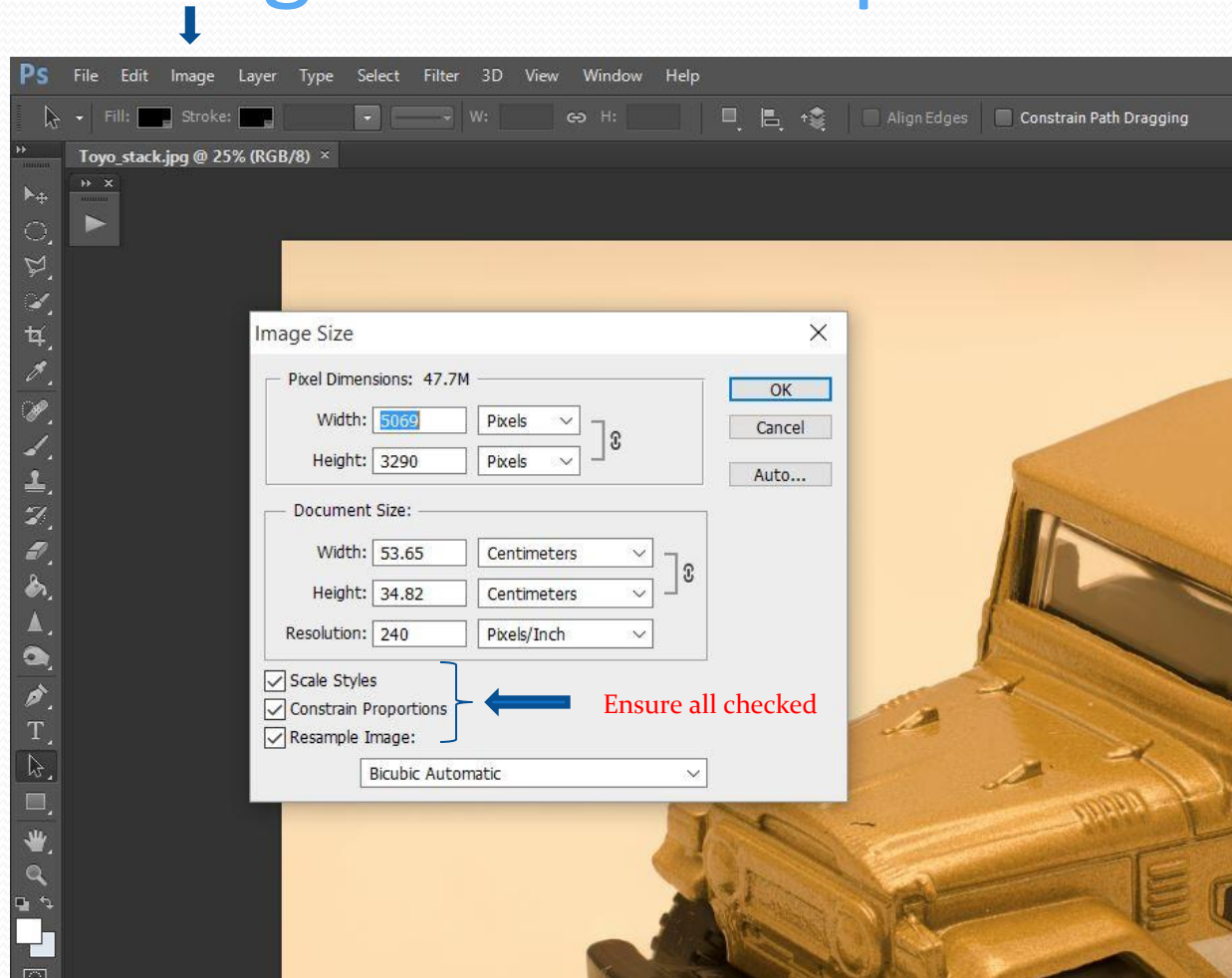


toy\_car\_your\_name  
e.jpg

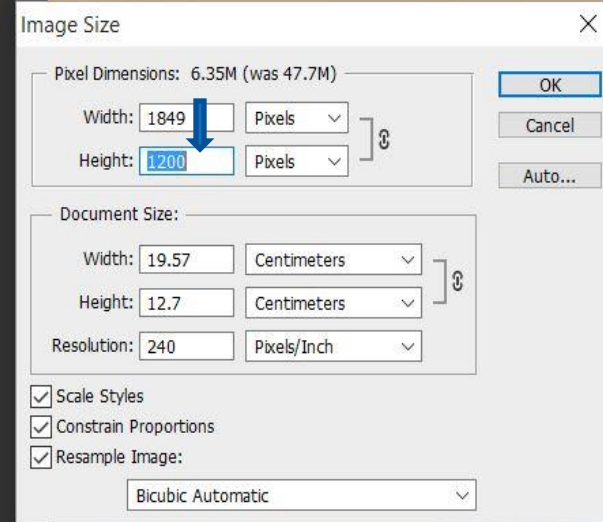
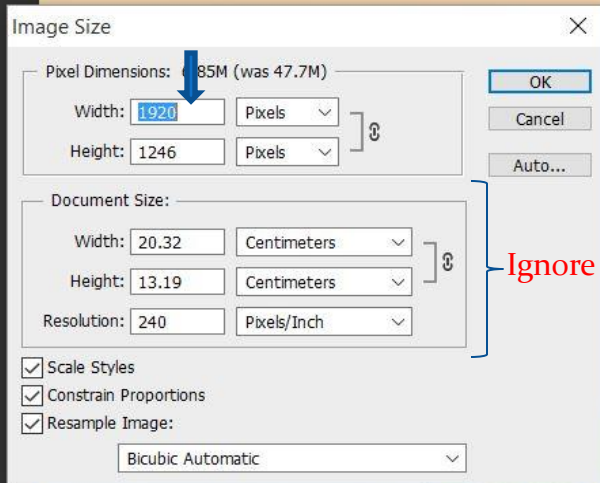
Rename downsized image.  
Use lower case & underscore instead of spaces.  
Refer to our website “Rules” page.

Image will be in sRGB colour space by default.

# Resizing in Photoshop



Open a copy of image to be resized in Photoshop.  
Click image > Image Size.  
This will display current size.

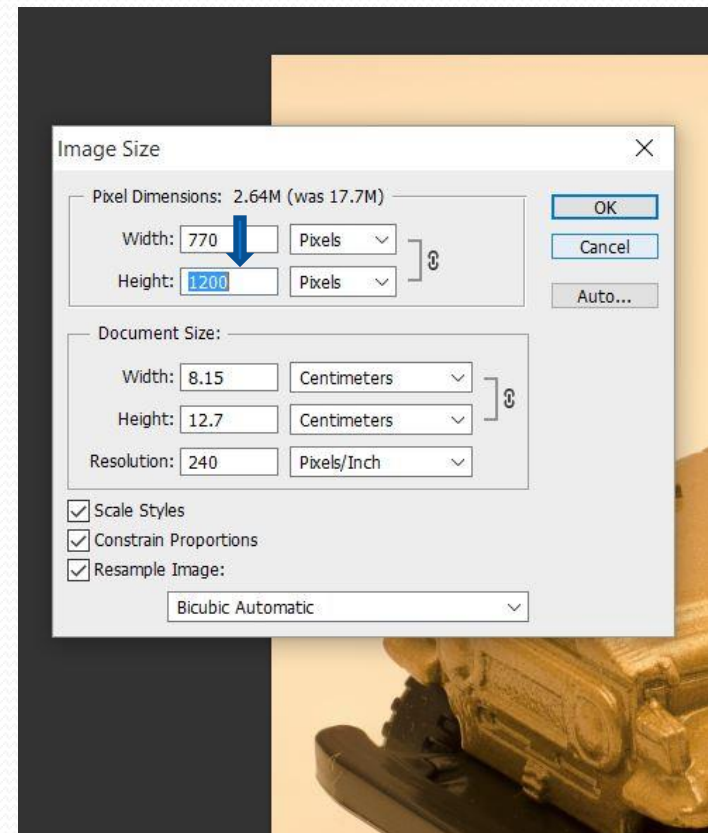
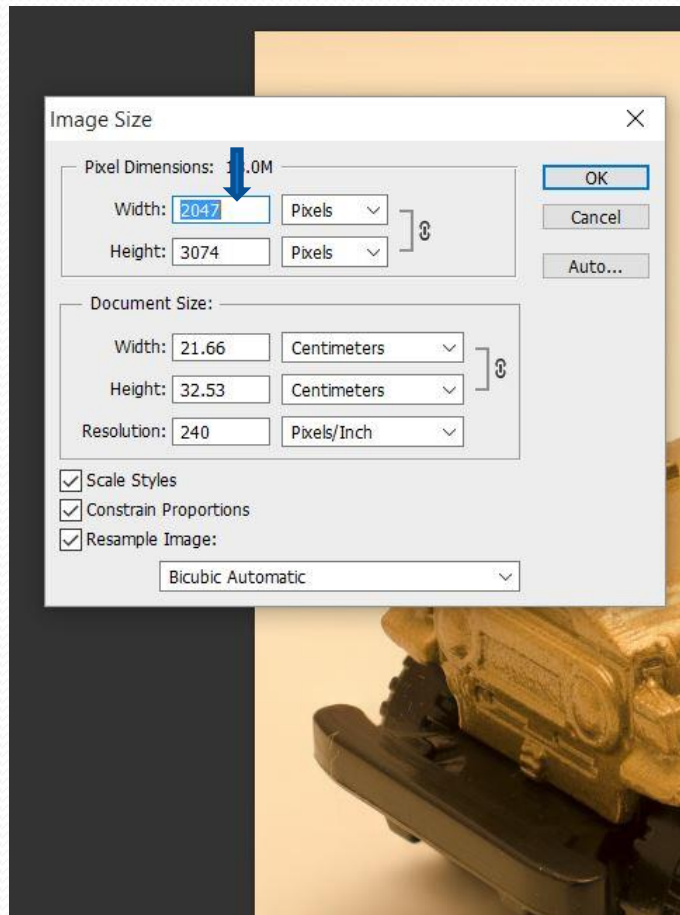


Change width to 1920 pixels.

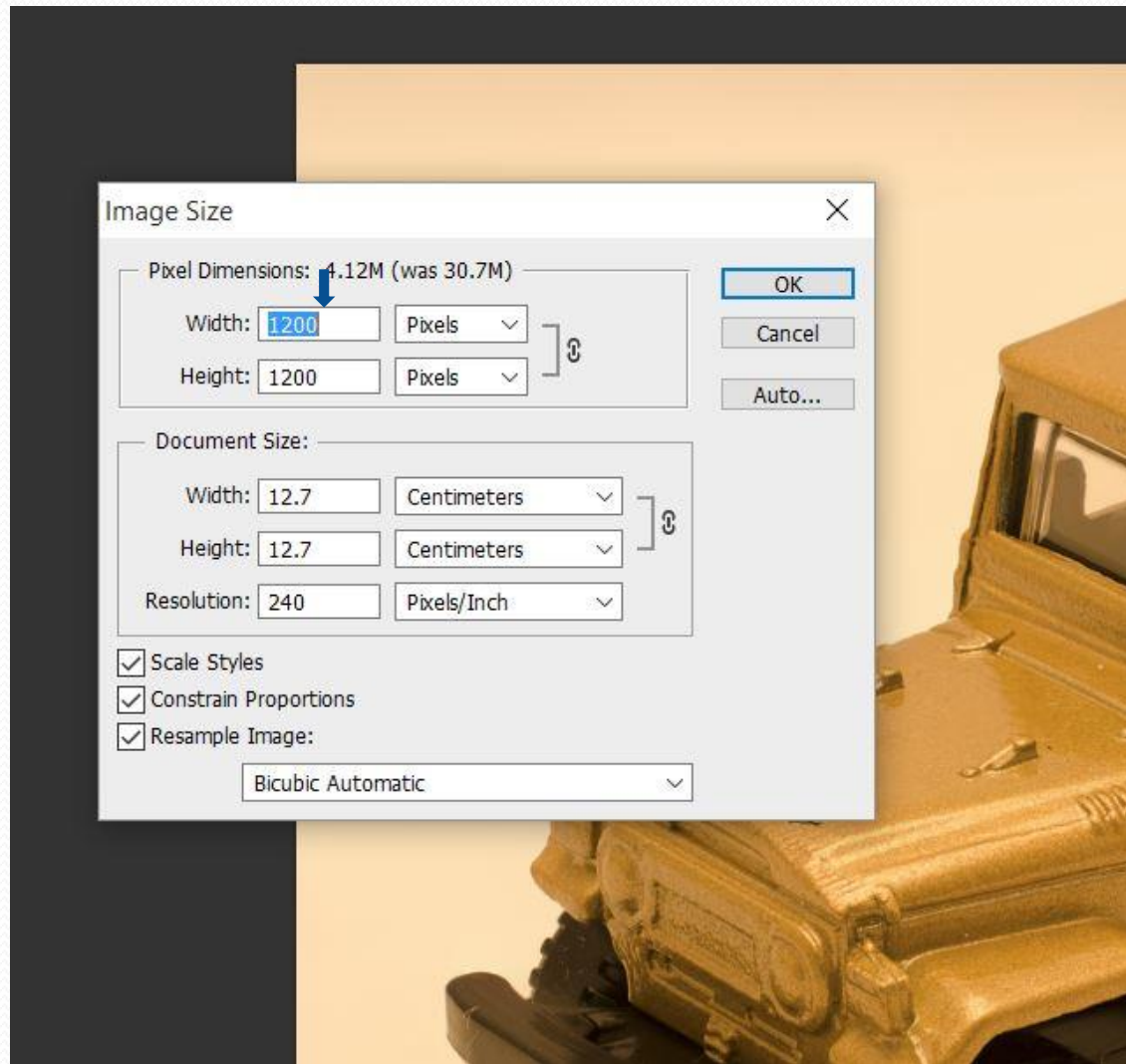
In this case, height still exceeds 1200 pixels. So reduce accordingly.

This will automatically adjust the width.

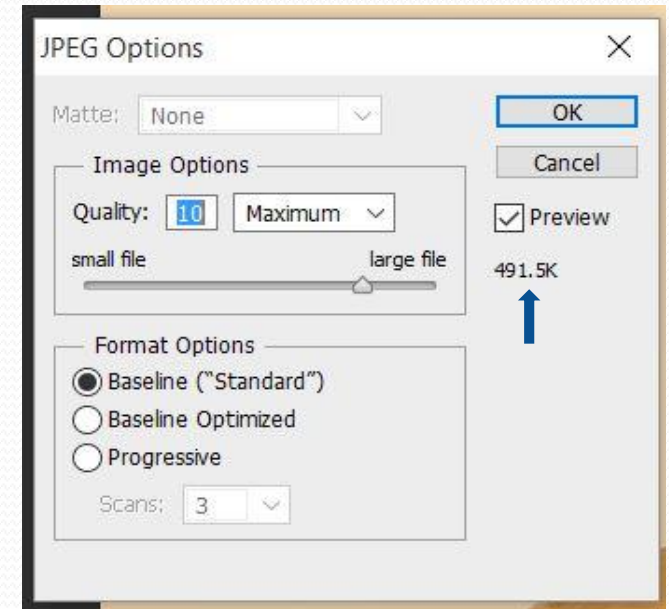
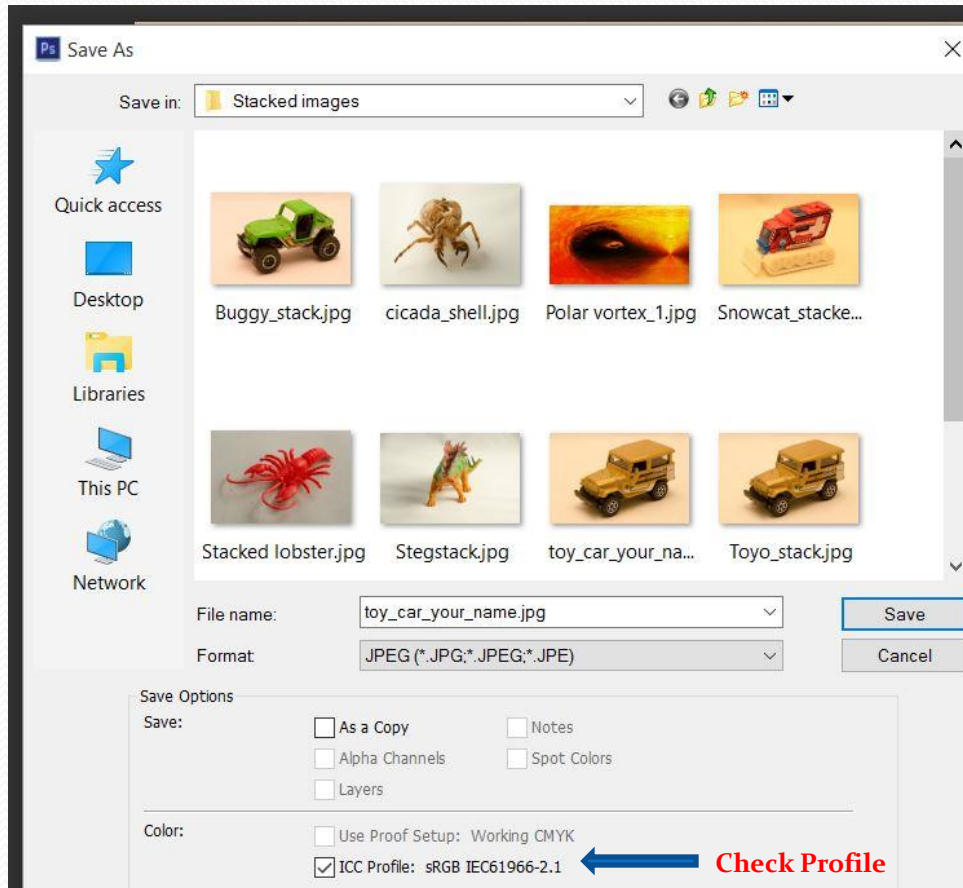
Ignore “Document Size” and “Resolution”. They do not affect the projected image.



Vertical (Portrait Format) images need to be reduced in height to no more than 1200 pixels.

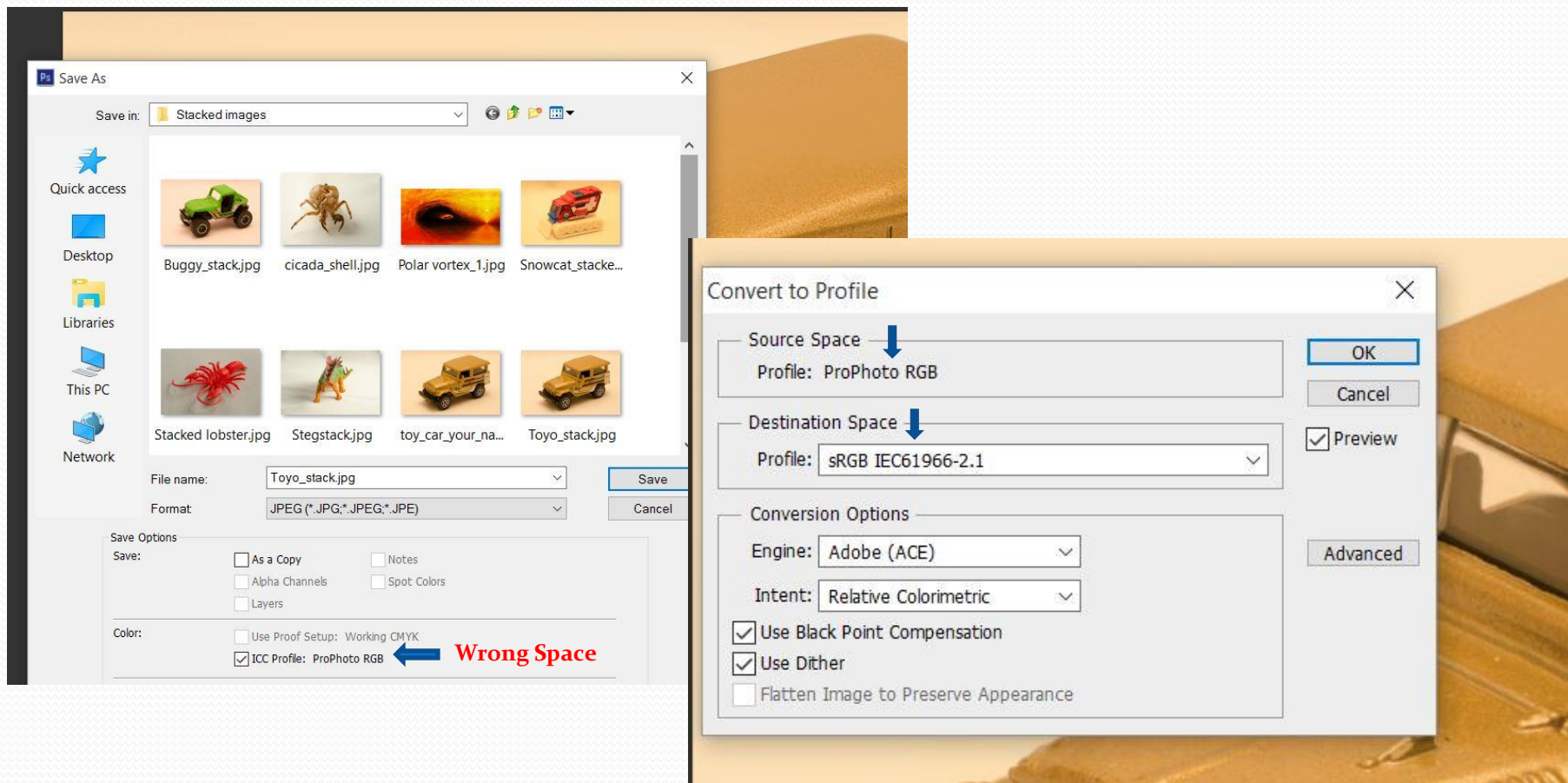


A square image is not to exceed 1200 pixels x 1200 pixels.



Adjust Image Options to 500 kb. max.  
Choose either of the Baseline Options.  
Do not choose Progressive. > OK.

Now go to File > Save As. Type in your title. Check that ICC Profile is sRGB IEC 61966-2.1. > Save.  
This brings up JPEG Options box shown on right.



If the image is in the wrong colour space, you need to go back to Edit > Convert to Profile, change destination space to sRGB IEC61966-2.1 > OK.

Note :- When submitting entries for competitions, ensure that your image files are sent as attachments.

Also, make sure that your email program does not downsize them further.

Remember, any file smaller than the specifications will project that much smaller on the screen.

Thank You

