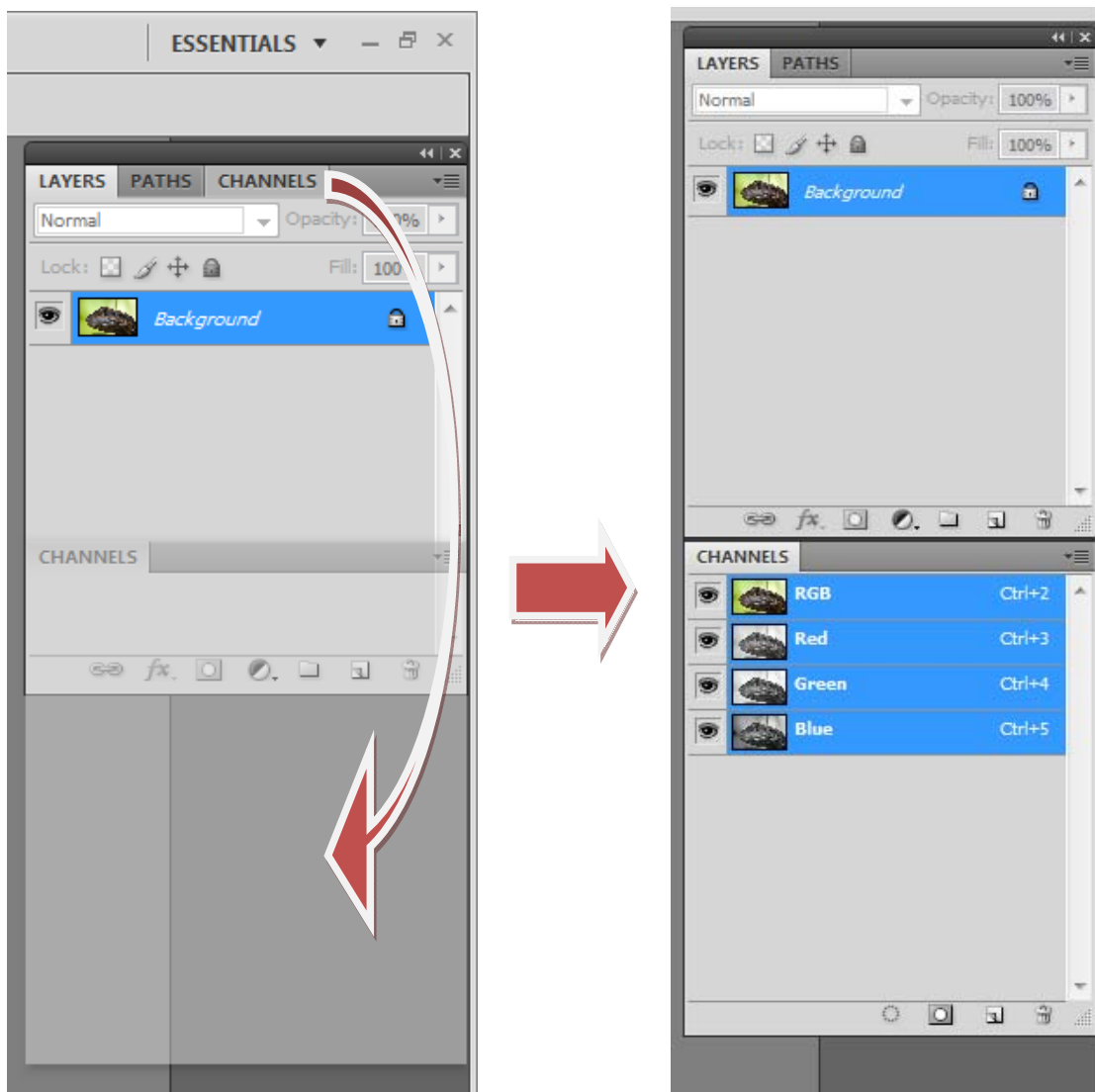
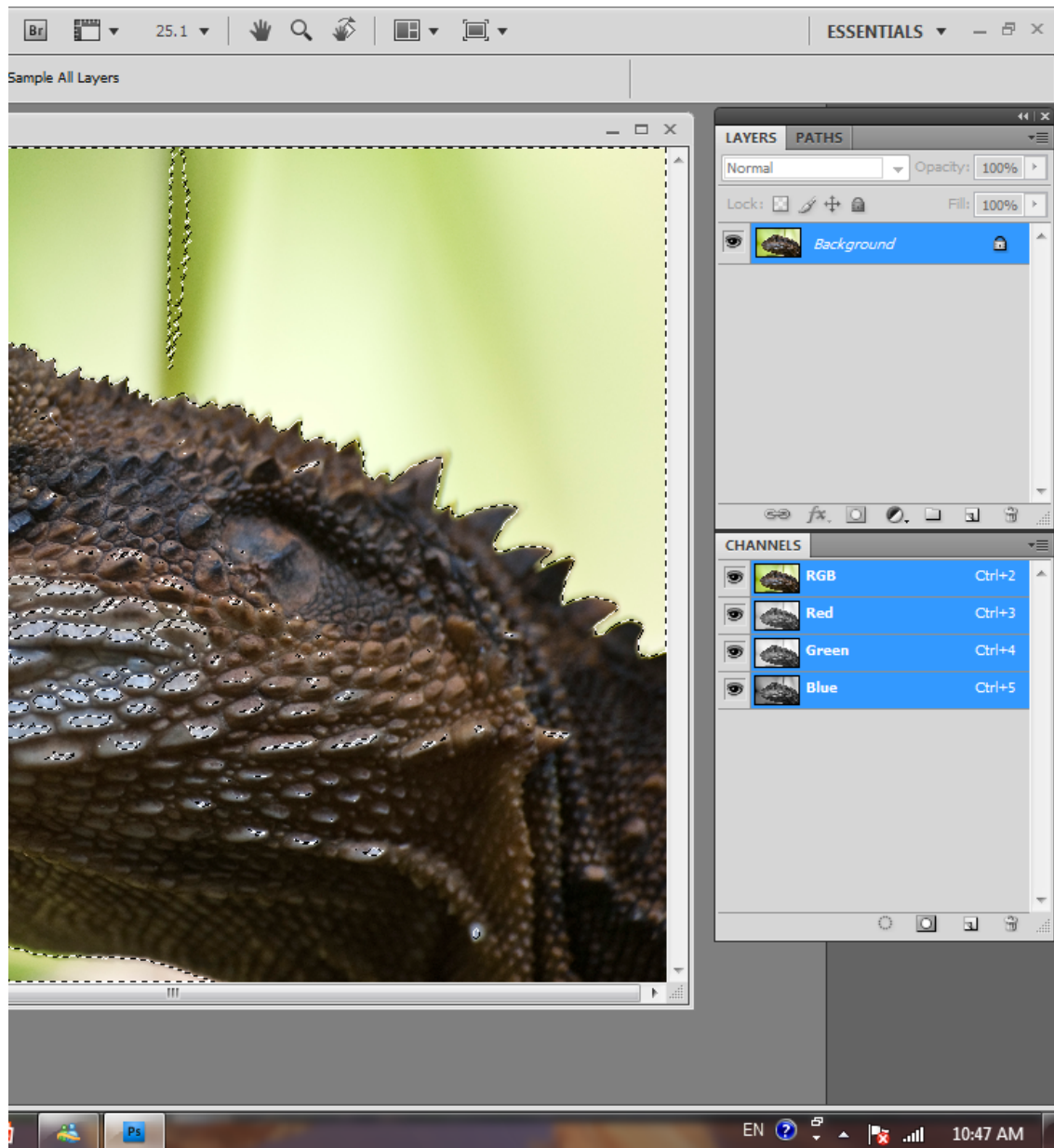


# Sharpening without over sharpening (Photoshop for Windows)

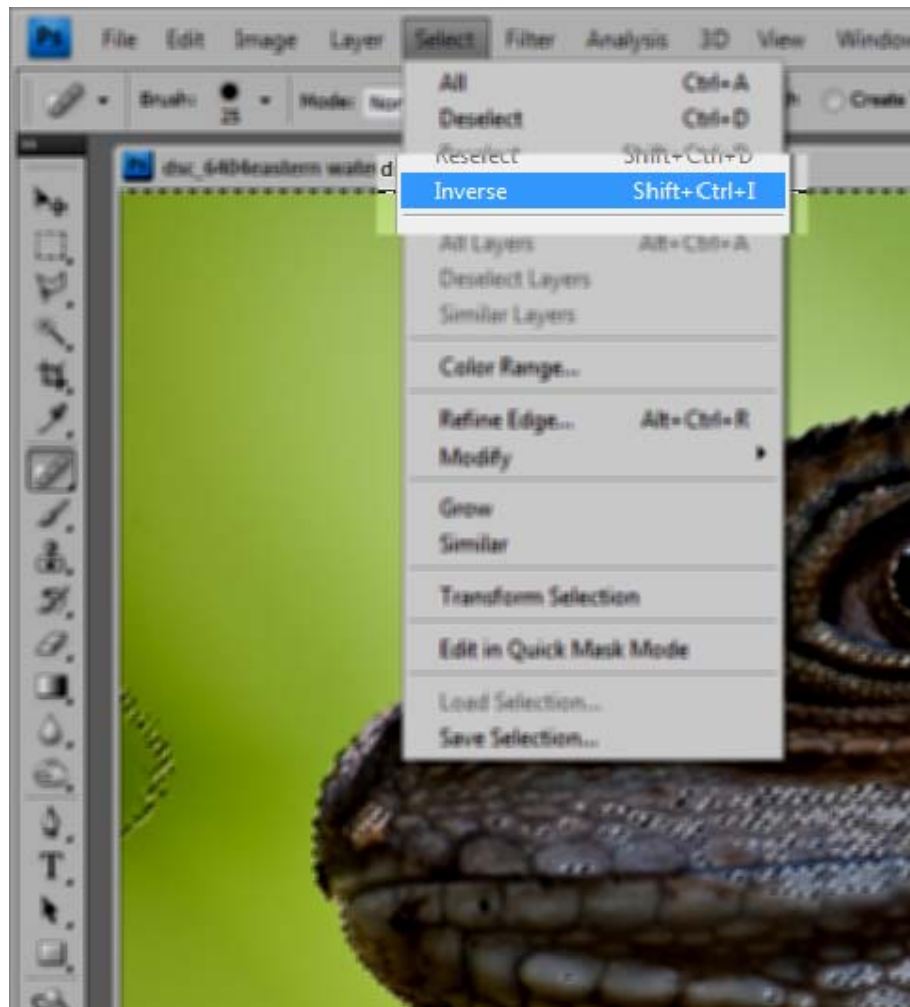
1. Open image in Photoshop.
2. Click and drag the Channels tab below the layers palette so that both the layers palette and channels palette are visible.
3. Copy background layer (ctrl+j) and rename to **sharpening**.



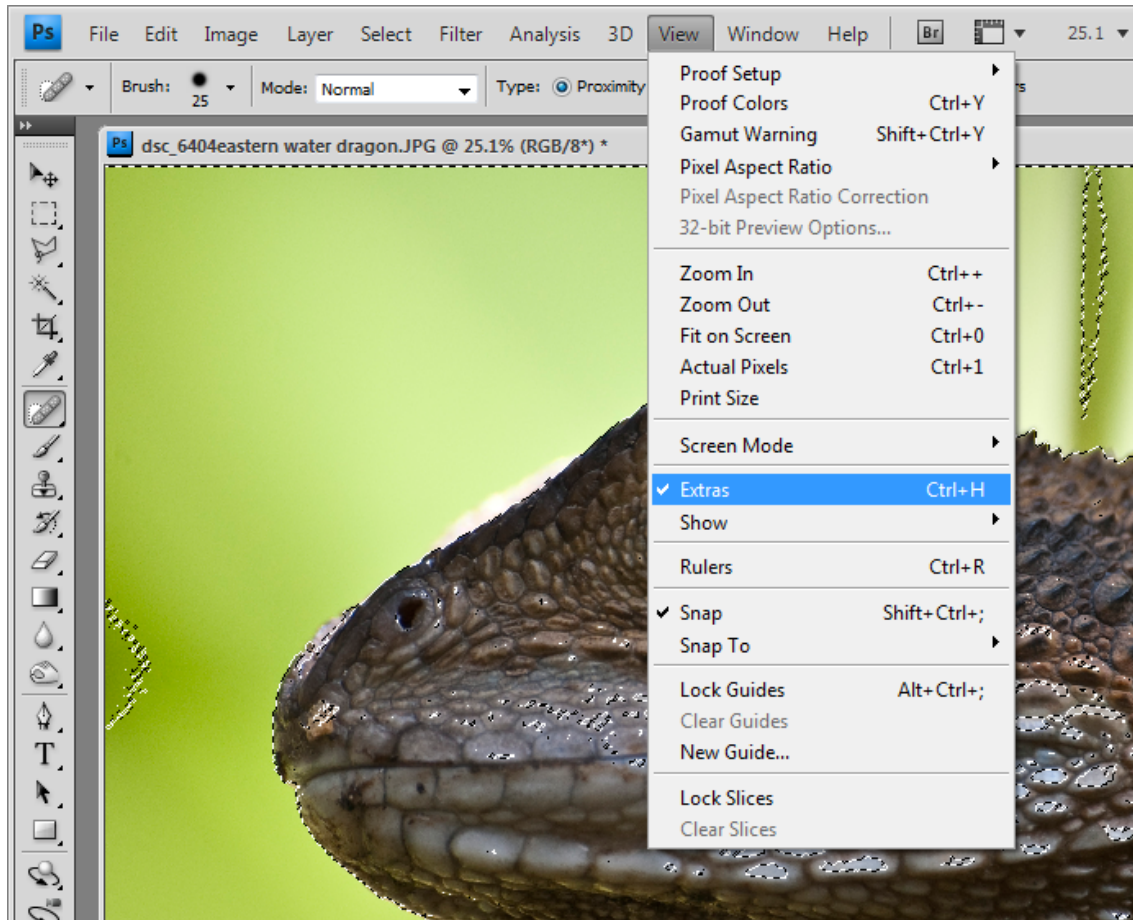
4. Hold down **CTRL** and click on RGB within the channel palette. (marching ants will appear)



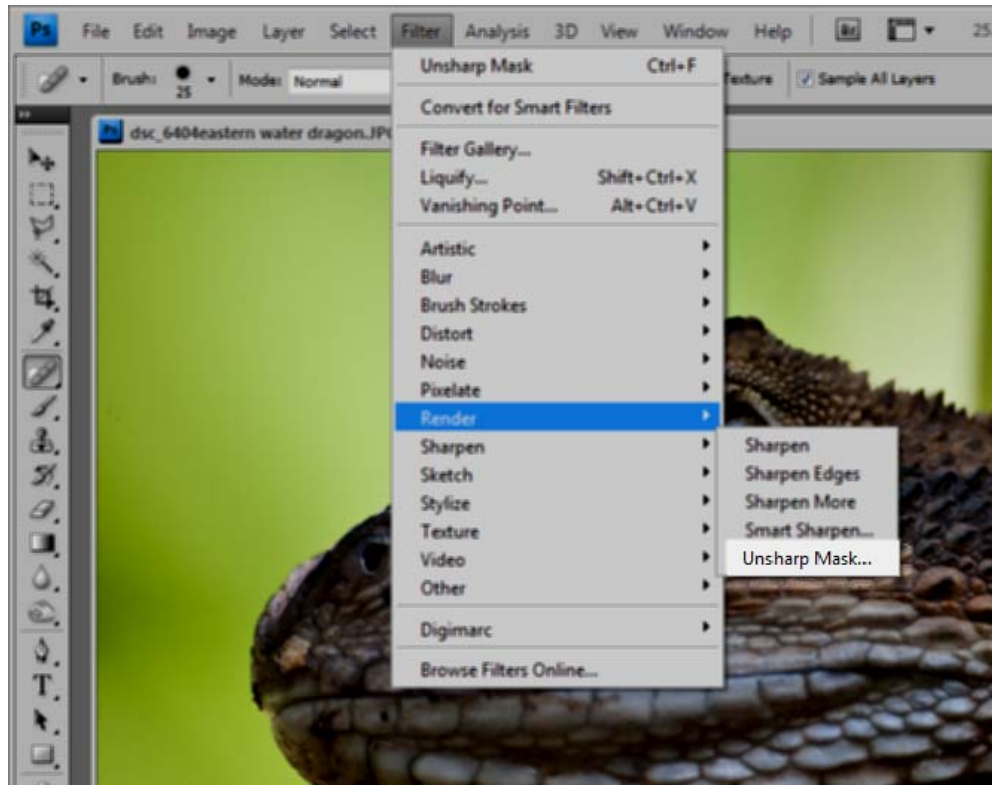
6. Choose **Select** from the drop down menu and then **inverse** (shift+ctrl+I).



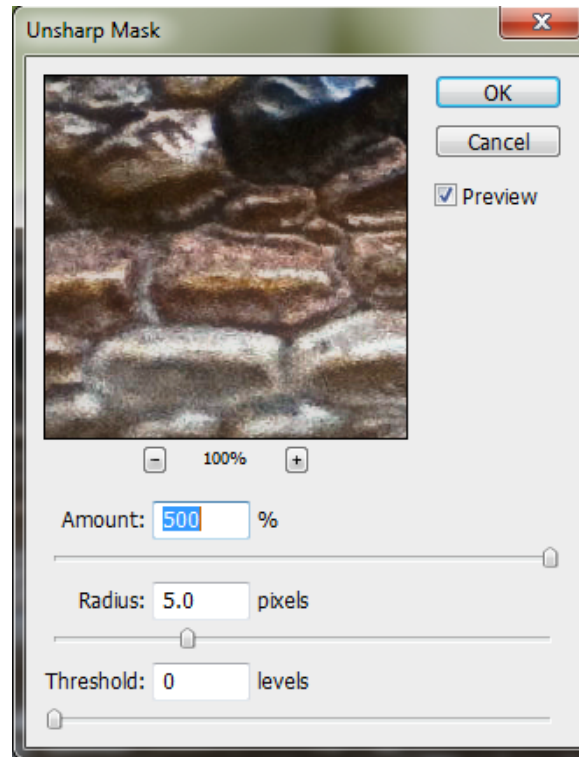
7. Choose **View** from the drop down menu and click on **Extras** to hide the marching ants (ctrl+H)



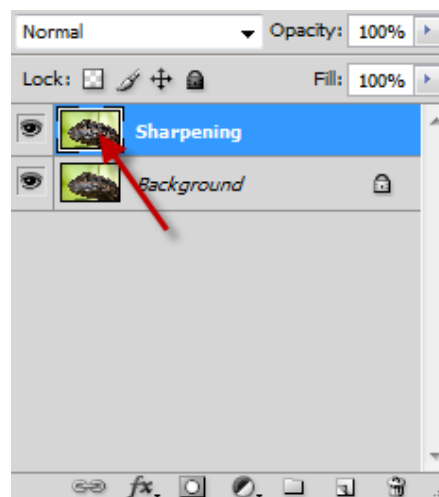
8. Choose **Filter** from the drop down menu followed by **Sharpen** and **Unsharp mask**.



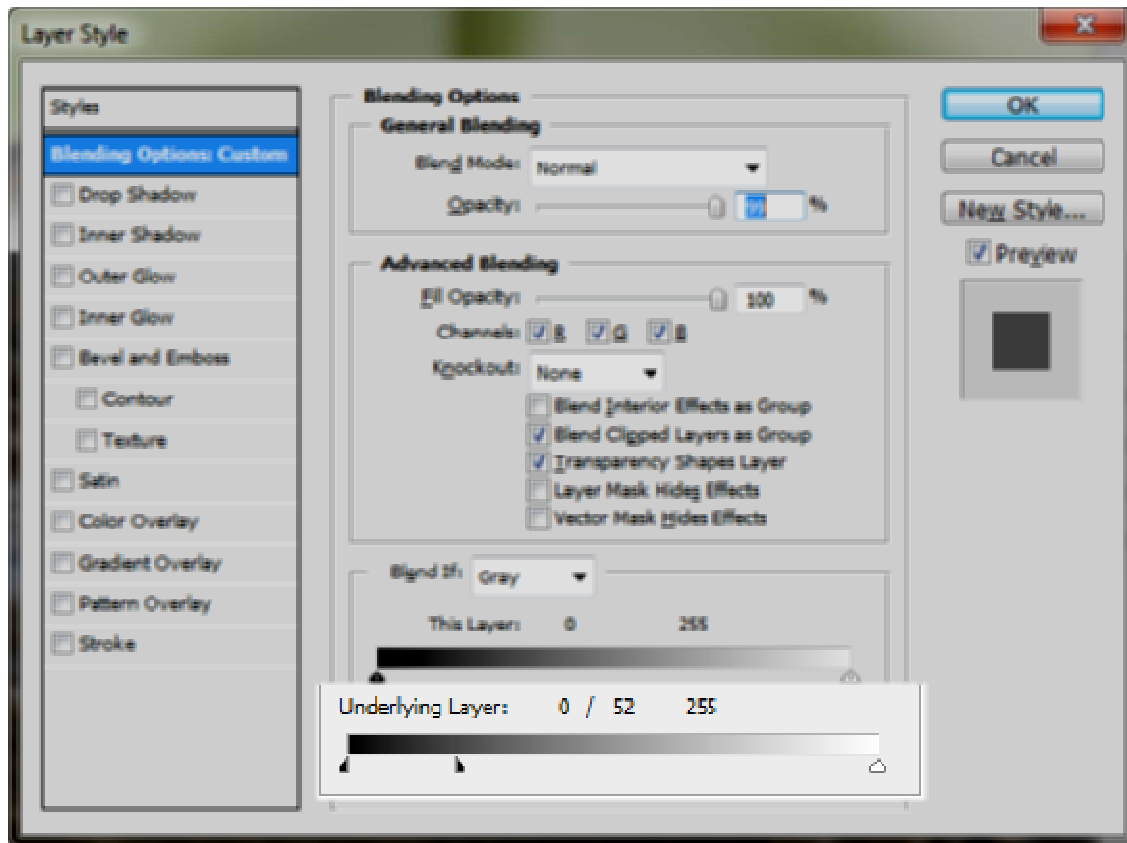
- Set the sharpening amount to 500 and increase the radius depending on number of megapixels of your camera. (a radius of 5 is usually suitable for a 12MP camera)



- Double click on the sharpening layer



11. Hold down the **Alt** key and slide the lower pointer to the right (it will split in half). How far you move the pointer to the right will depend on the type of picture you're sharpening. For my water dragon, I've moved it to around 50.





Before



After





